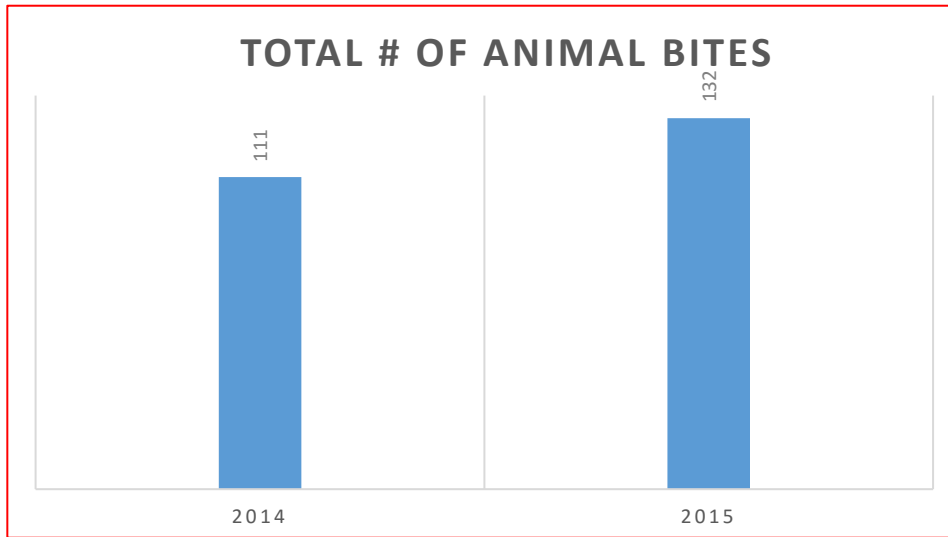




## Animal Bite Trends

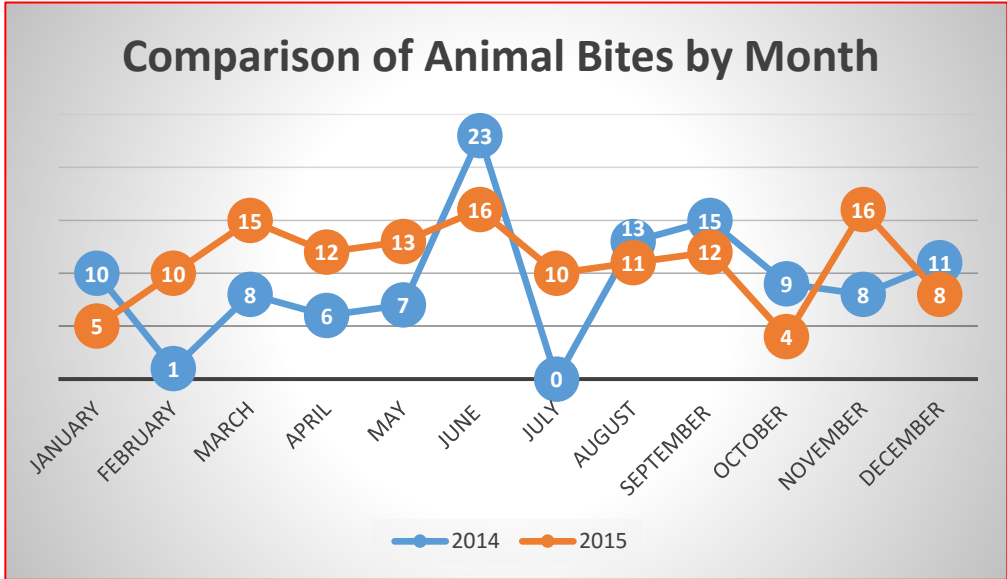
### 2014 & 2015 Comparison and Conclusions

2014 and 2015 animal bite data collected by Laurel County Health Department’s Environmental Services was analyzed using Microsoft Excel. The analysis was performed to look for patterns in: when the bite occurred, the part of the body affected, and the age of the bite victim. Below are a series of graphs created to help better observe these patterns and trends.



An 18.9% increase in bites occurred from 2014-2015.

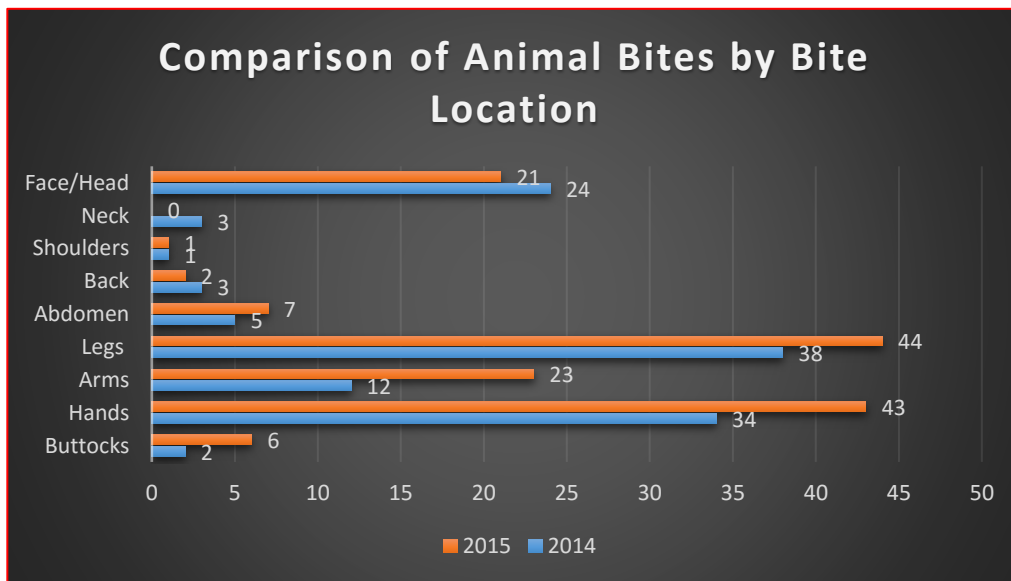
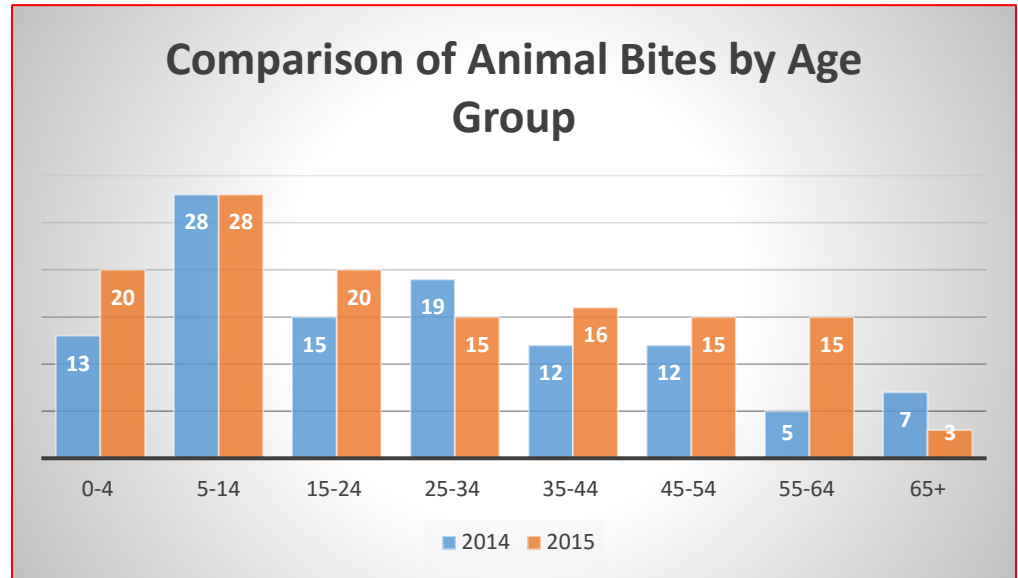
The months with the largest difference in bite reports were February and July. February had 9 more bites in 2015 than 2014 and July had 10 more bites in 2015 than 2014. The next month with the largest difference was November with 8 more bites in 2015 than 2014. November 2015 was an unusually warm month. Many people were still active outside allowing for more interaction with outside pets.



Bites for ages 5-14 remained consistent over the two years at 28 reported bites during each year.

Several of the other age groups had slight changes in the number of bites, some with an increase and some with a decrease.

The biggest difference occurred for the 55-64 age group with a 200% increase in bites from 2014-2015.

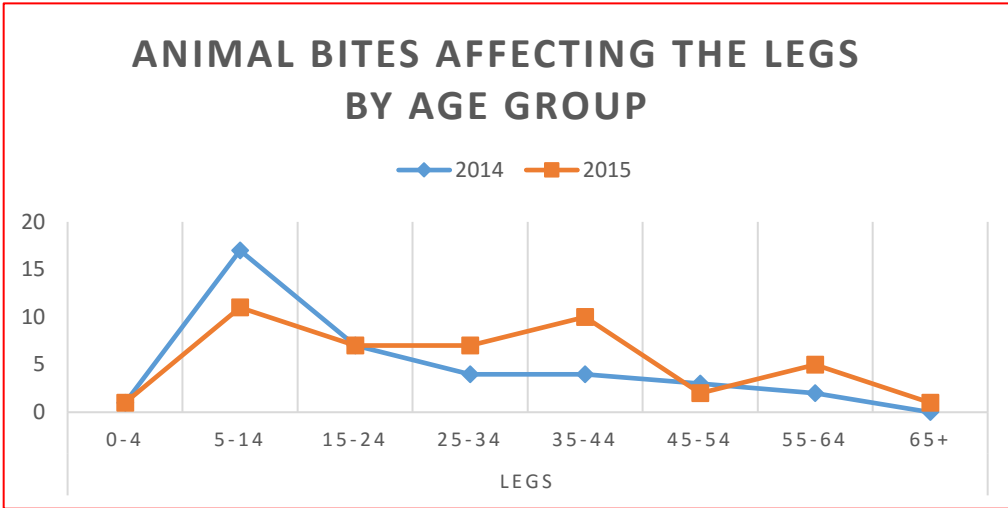


When looking at bites by location, Hands and Legs were reported the most for both years, with Face/Head being reported the third highest.

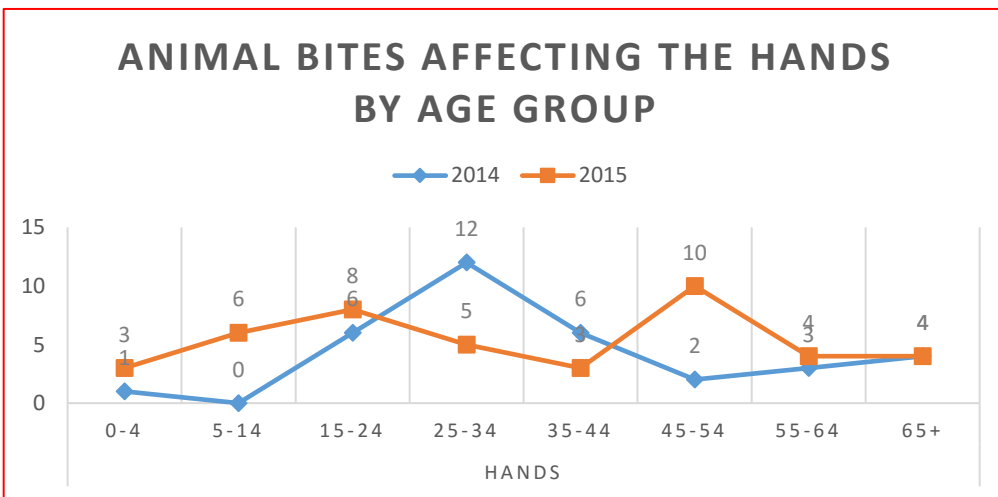
The reported increase for Legs was 15.8% and Hands was 26.5% respectively.

A decrease in Face/Head bites of 12.5% was reported and a decrease of 48% was reported for Arm bites.

The three bite locations with the highest number of reports were also analyzed by age group and compared during the two years.



The age group with the highest reported bites affecting the legs for both years was the 5-14 age range. The 35-44 age range had 150% increase in bites affecting the legs from 2014-2015

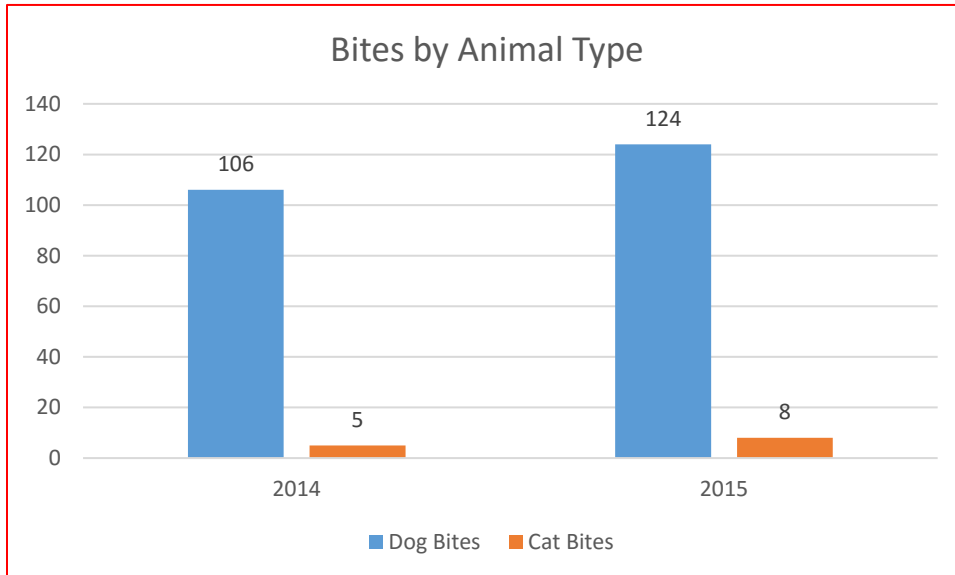
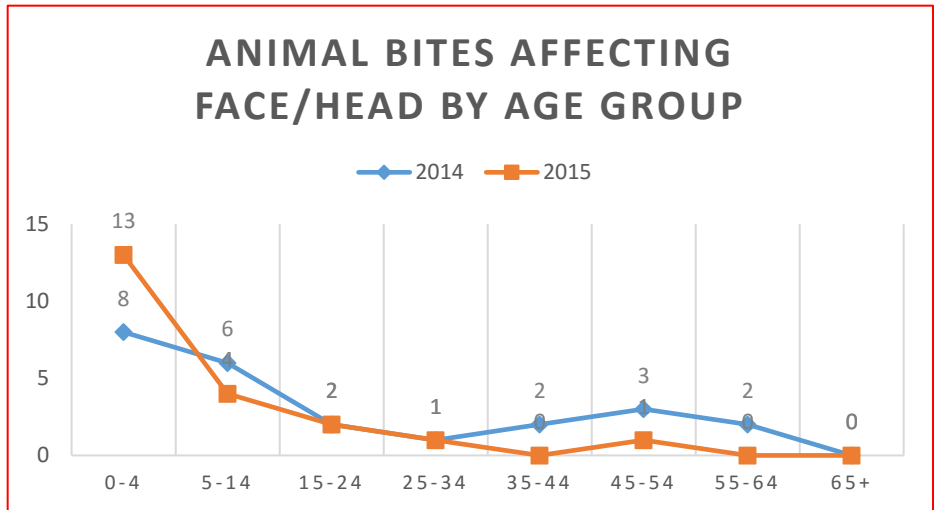


The most bites affecting the hands were reported for the 25-34 age range over the two year period, however there was a 58.3% decrease in these reports from 2014-2015. The 15-24 age range had the second highest number of bites affecting the hands reported over the two years, with no significant change over the two year period.

The other significant change over the two years was with the 45-54 age range, which had a 200% increase in reported bites affecting the hands.

Animal Bites affecting the Face/Head occurred most frequently in the 0-4 age range and there was a 62.5% increase in these bites from 2014 to 2015.

This is mostly likely because small children are closer to the ground with the animal making the face/head area the most susceptible to bites.



More dog bites were reported for both years, but there was 17% increase of these bites from 2014-2015.

Cat bites made up approximately 5% of the bites for 2014 and 7% of the bites for 2015.